

## Test Report

No. : CE/2015/82122

Date : 2015/08/18

Page: 1 of 6

NAMICS CORPORATION  
3993 NIGORIKAWA, KITA-KU, NIIGATA-CITY 950-3131, JAPAN




The following sample(s) was/were submitted and identified by/on behalf of the applicant as :

Sample Submitted By : NAMICS CORPORATION  
Sample Description : 7454B  
Sample Receiving Date : 2015/08/12  
Testing Period : 2015/08/12 TO 2015/08/18

=====  
**Test Requested** : As specified by client, with reference to RoHS Directive 2011/65/EU Annex II to determine Cadmium, Lead, Mercury, Cr(VI), PBBs, PBDEs contents in the submitted sample.

**Test Method** : Please refer to next pages.

**Test Result(s)** : Please refer to next page(s).

  
  
**Troy Chang, Manager - Tech**  
**Signed for and on behalf of**  
**SGS TAIWAN LTD.**  
**Chemical Laboratory - Taipei**

This document is issued by the Company subject to its General Conditions of Service printed overleaf, available on request or accessible at <http://www.sgs.com/en/Terms-and-Conditions.aspx> and, for electronic format documents, subject to Terms and Conditions for Electronic Documents at <http://www.sgs.com/en/Terms-and-Conditions/Termse-Document.aspx>. Attention is drawn to the limitation of liability, indemnification and jurisdiction issues defined therein. Any holder of this document is advised that information contained hereon reflects the Company's findings at the time of its intervention only and within the limits of client's instruction, if any. The Company's sole responsibility is to its Client and this document does not exonerate parties to a transaction from exercising all their rights and obligations under the transaction documents. This document cannot be reproduced, except in full, without prior written approval of the Company. Any unauthorized alteration, forgery or falsification of the content or appearance of this document is unlawful and offenders may be prosecuted to the fullest extent of the law. Unless otherwise stated the results shown in this test report refer only to the sample(s) tested.

# Test Report

No. : CE/2015/82122

Date : 2015/08/18

Page: 2 of 6

NAMICS CORPORATION  
3993 NIGORIKAWA, KITA-KU, NIIGATA-CITY 950-3131, JAPAN



## Test Result(s)

PART NAME No.1 : GRAY PASTE

| Test Item(s)               | Unit  | Method  | MDL  | Result |
|----------------------------|-------|---|------|--------|
|                            |       |   |      | No.1   |
| Cadmium (Cd)               | mg/kg | With reference to IEC 62321-5: 2013 and performed by ICP-AES. | 2    | n.d.   |
| Lead (Pb)                  | mg/kg | With reference to IEC 62321-5: 2013 and performed by ICP-AES. | 2    | n.d.   |
| Mercury (Hg)               | mg/kg | With reference to IEC 62321-4: 2013 and performed by ICP-AES. | 2    | n.d.   |
| Hexavalent Chromium Cr(VI) | mg/kg | With reference to IEC 62321: 2008 and performed by UV-VIS.    | 2    | n.d.   |
| <b>Sum of PBBs</b>         | mg/kg | With reference to IEC 62321-6: 2015 and performed by GC/MS.   | -    | n.d.   |
| Monobromobiphenyl          | mg/kg |   | 5    | n.d.   |
| Dibromobiphenyl            | mg/kg |   | 5    | n.d.   |
| Tribromobiphenyl           | mg/kg |   | 5    | n.d.   |
| Tetrabromobiphenyl         | mg/kg |   | 5    | n.d.   |
| Pentabromobiphenyl         | mg/kg |   | 5    | n.d.   |
| Hexabromobiphenyl          | mg/kg |   | 5    | n.d.   |
| Heptabromobiphenyl         | mg/kg |   | 5    | n.d.   |
| Octabromobiphenyl          | mg/kg |   | 5    | n.d.   |
| Nonabromobiphenyl          | mg/kg |   | 5    | n.d.   |
| Decabromobiphenyl          | mg/kg |   | 5    | n.d.   |
| <b>Sum of PBDEs</b>        | mg/kg |   | -    | n.d.   |
| Monobromodiphenyl ether    | mg/kg |   | 5    | n.d.   |
| Dibromodiphenyl ether      | mg/kg |   | 5    | n.d.   |
| Tribromodiphenyl ether     | mg/kg |   | 5    | n.d.   |
| Tetrabromodiphenyl ether   | mg/kg |   | 5    | n.d.   |
| Pentabromodiphenyl ether   | mg/kg |   | 5    | n.d.   |
| Hexabromodiphenyl ether    | mg/kg |   | 5    | n.d.   |
| Heptabromodiphenyl ether   | mg/kg |   | 5    | n.d.   |
| Octabromodiphenyl ether    | mg/kg |   | 5    | n.d.   |
| Nonabromodiphenyl ether    | mg/kg | 5   | n.d. |        |
| Decabromodiphenyl ether    | mg/kg | 5   | n.d. |        |

This document is issued by the Company subject to its General Conditions of Service printed overleaf, available on request or accessible at <http://www.sgs.com/en/Terms-and-Conditions.aspx> and, for electronic format documents, subject to Terms and Conditions for Electronic Documents at <http://www.sgs.com/en/Terms-and-Conditions/Termse-Documents.aspx>. Attention is drawn to the limitation of liability, indemnification and jurisdiction issues defined therein. Any holder of this document is advised that information contained hereon reflects the Company's findings at the time of its intervention only and within the limits of client's instruction, if any. The Company's sole responsibility is to its Client and this document does not exonerate parties to a transaction from exercising all their rights and obligations under the transaction documents. This document cannot be reproduced, except in full, without prior written approval of the Company. Any unauthorized alteration, forgery or falsification of the content or appearance of this document is unlawful and offenders may be prosecuted to the fullest extent of the law. Unless otherwise stated the results shown in this test report refer only to the sample(s) tested.

## Test Report

No. : CE/2015/82122

Date : 2015/08/18

Page: 3 of 6

NAMICS CORPORATION  
3993 NIGORIKAWA, KITA-KU, NIIGATA-CITY 950-3131, JAPAN



### Note :

1. mg/kg = ppm ; 0.1wt% = 1000ppm
2. n.d. = Not Detected
3. MDL = Method Detection Limit
4. " - " = Not Regulated

This document is issued by the Company subject to its General Conditions of Service printed overleaf, available on request or accessible at <http://www.sgs.com/en/Terms-and-Conditions.aspx> and, for electronic format documents, subject to Terms and Conditions for Electronic Documents at <http://www.sgs.com/en/Terms-and-Conditions/Termse-Documents.aspx>. Attention is drawn to the limitation of liability, indemnification and jurisdiction issues defined therein. Any holder of this document is advised that information contained hereon reflects the Company's findings at the time of its intervention only and within the limits of client's instruction, if any. The Company's sole responsibility is to its Client and this document does not exonerate parties to a transaction from exercising all their rights and obligations under the transaction documents. This document cannot be reproduced, except in full, without prior written approval of the Company. Any unauthorized alteration, forgery or falsification of the content or appearance of this document is unlawful and offenders may be prosecuted to the fullest extent of the law. Unless otherwise stated the results shown in this test report refer only to the sample(s) tested.

## Test Report

No. : CE/2015/82122

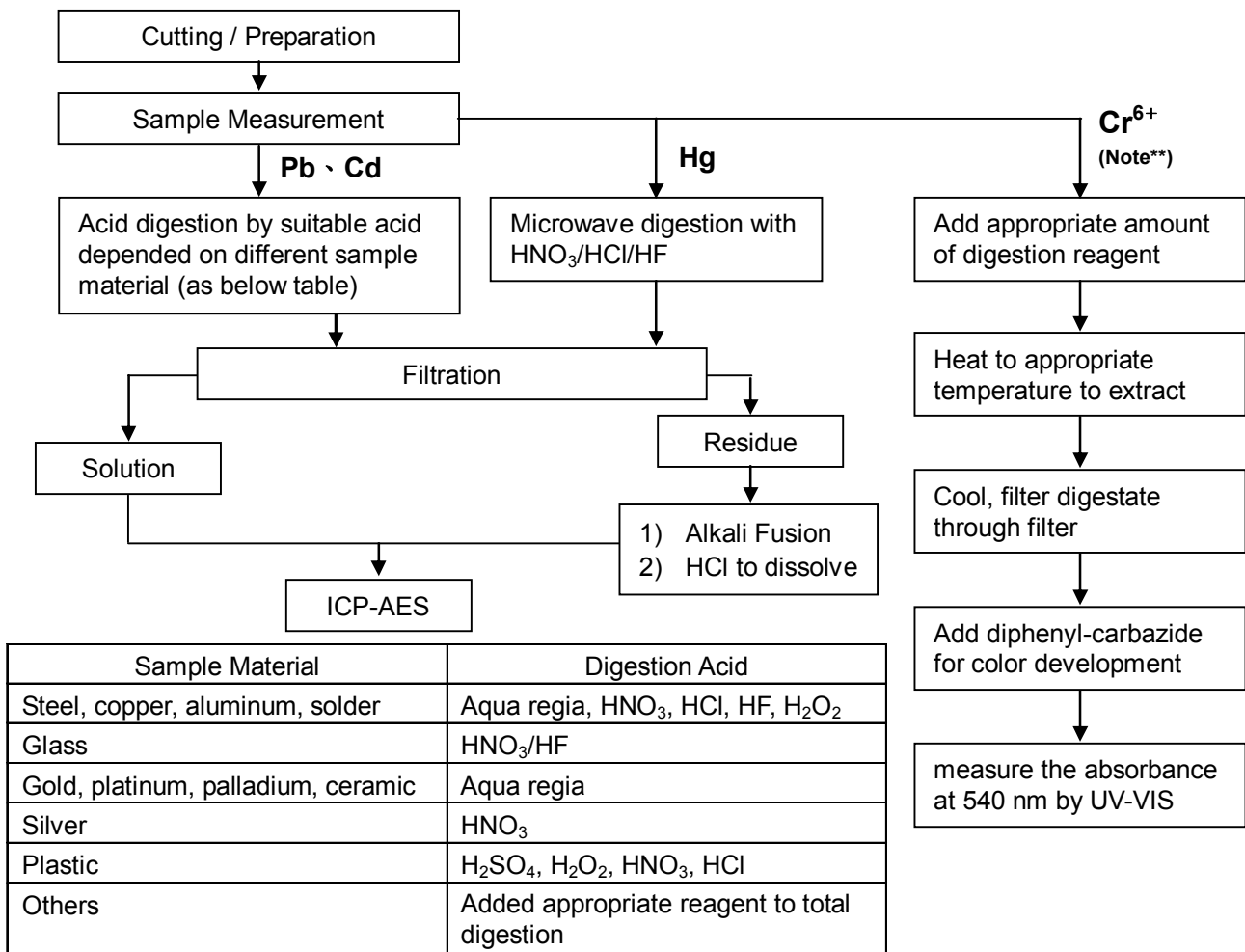
Date : 2015/08/18

Page: 4 of 6

NAMICS CORPORATION  
3993 NIGORIKAWA, KITA-KU, NIIGATA-CITY 950-3131, JAPAN



- 1) These samples were dissolved totally by pre-conditioning method according to below flow chart.  
(Cr<sup>6+</sup> test method excluded)
- 2) Name of the person who made measurement: Climbgreat Yang
- 3) Name of the person in charge of measurement: Troy Chang



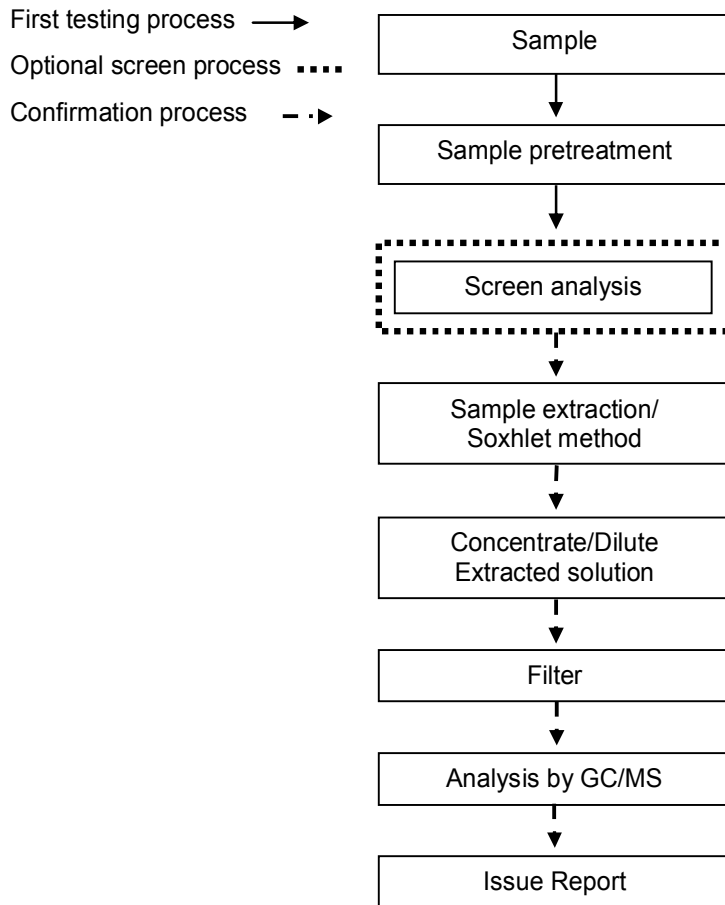
**Note\*\* :** (1) For non-metallic material, add alkaline digestion reagent and heat to 90~95°C.  
(2) For metallic material, add pure water and heat to boiling.

NAMICS CORPORATION  
3993 NIGORIKAWA, KITA-KU, NIIGATA-CITY 950-3131, JAPAN



### PBB/PBDE analytical FLOW CHART

- Name of the person who made measurement: Roman Wong
- Name of the person in charge of measurement: Troy Chang



This document is issued by the Company subject to its General Conditions of Service printed overleaf, available on request or accessible at <http://www.sgs.com/en/Terms-and-Conditions.aspx> and, for electronic format documents, subject to Terms and Conditions for Electronic Documents at <http://www.sgs.com/en/Terms-and-Conditions/Termse-Document.aspx>. Attention is drawn to the limitation of liability, indemnification and jurisdiction issues defined therein. Any holder of this document is advised that information contained hereon reflects the Company's findings at the time of its intervention only and within the limits of client's instruction, if any. The Company's sole responsibility is to its Client and this document does not exonerate parties to a transaction from exercising all their rights and obligations under the transaction documents. This document cannot be reproduced, except in full, without prior written approval of the Company. Any unauthorized alteration, forgery or falsification of the content or appearance of this document is unlawful and offenders may be prosecuted to the fullest extent of the law. Unless otherwise stated the results shown in this test report refer only to the sample(s) tested.

## Test Report

No. : CE/2015/82122

Date : 2015/08/18

Page: 6 of 6

NAMICS CORPORATION  
3993 NIGORIKAWA, KITA-KU, NIIGATA-CITY 950-3131, JAPAN



\* The tested sample / part is marked by an arrow if it's shown on the photo. \*

### CE/2015/82122



\*\* End of Report \*\*

This document is issued by the Company subject to its General Conditions of Service printed overleaf, available on request or accessible at <http://www.sgs.com/en/Terms-and-Conditions.aspx> and, for electronic format documents, subject to Terms and Conditions for Electronic Documents at <http://www.sgs.com/en/Terms-and-Conditions/Termse-Document.aspx>. Attention is drawn to the limitation of liability, indemnification and jurisdiction issues defined therein. Any holder of this document is advised that information contained hereon reflects the Company's findings at the time of its intervention only and within the limits of client's instruction, if any. The Company's sole responsibility is to its Client and this document does not exonerate parties to a transaction from exercising all their rights and obligations under the transaction documents. This document cannot be reproduced, except in full, without prior written approval of the Company. Any unauthorized alteration, forgery or falsification of the content or appearance of this document is unlawful and offenders may be prosecuted to the fullest extent of the law. Unless otherwise stated the results shown in this test report refer only to the sample(s) tested.