



# KING CORE ELECTRONICS INC.

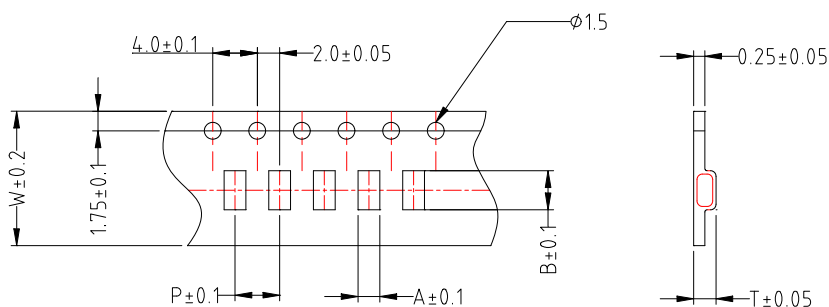
Tel: 886-3-4698855 Fax: 886-3-4691395

Web Site: <http://www.kingcore.com.tw>

e-mail: [kc@mail.kingcore.com.tw](mailto:kc@mail.kingcore.com.tw)

## PACKAGING - BA4□ SERIES

### ◎TAPE DIMENSIONS AND PACKAGING QUANTITIES



#### TAPE MATERIAL:

CARRIER TAPE: POLYSTYRENE

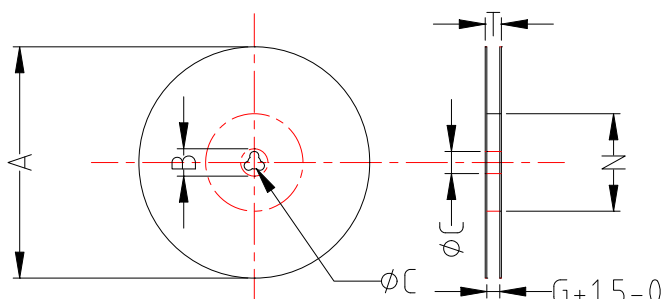
COVER TAPE: POLYETHYLENE

UNIT:mm

SIZE CODE	A	B	T	W	P	CHIPS/REEL
160808	1.08	1.88	1.05	8	4	4000
201209	1.42	2.24	1.04	8	4	4000
201212	1.50	2.30	1.60	8	4	2000
<b>321608</b>	<b>1.77</b>	<b>3.40</b>	<b>1.04</b>	<b>8</b>	<b>4</b>	<b>3000</b>
322513	2.85	3.56	1.66	8	4	2000
451616	1.95	4.95	1.93	12	4	2000
453215	3.66	4.95	1.83	12	8	1000

### ◎REEL DIMENSIONS

#### CARRIER TYPE REELS



Material: Plastic/ Paper

W is the tape width

W	8mm	12mm
A	<b>178.0±2.0</b>	178.0±2.0
B	<b>21.0±0.8</b>	21.0±0.8
C	<b>13.0±0.8</b>	13.0±0.8
G	<b>10.0</b>	14.0
N	<b>75.0</b>	75.0
T	<b>12.5</b>	16.5

Ps. 8mm tape width: for type 160808, 201209, 201212, 321608, 322513

12mm tape width: for type 451616, 453215



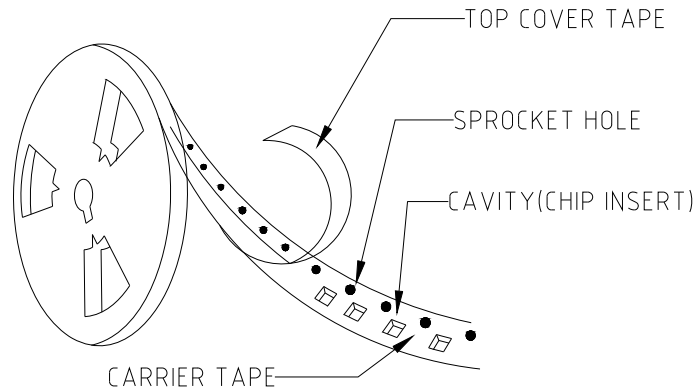
# KING CORE ELECTRONICS INC.

Tel: 886-3-4698855 Fax: 886-3-4691395

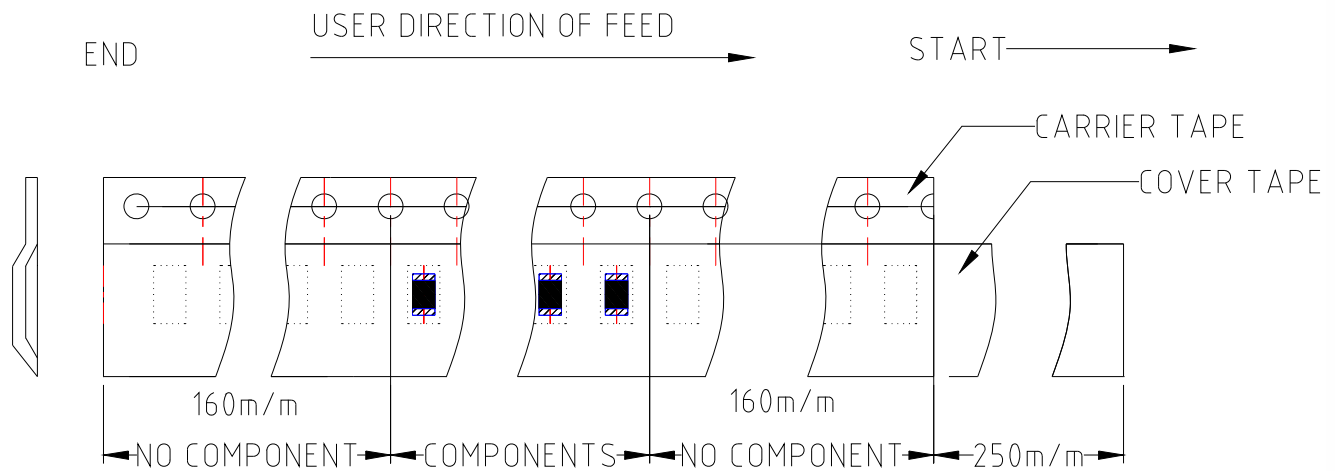
Web Site: <http://www.kingcore.com.tw>

e-mail: [kc@mail.kingcore.com.tw](mailto:kc@mail.kingcore.com.tw)

## ◎STRUCTURE OF TAPING



## ◎LEADER AND TRAILER TAPE



## ◎STRENGTH OF CARRIER TAPE AND TOP COVER TAPE

The force for tearing off cover tape is 10 to 130 grams in the arrow direction

