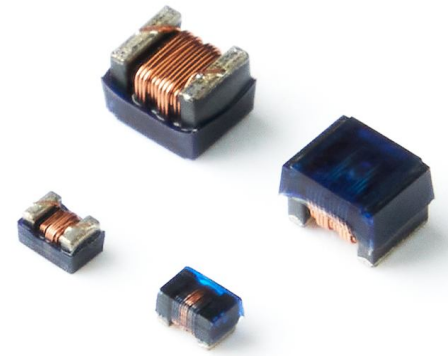


WOUND CHIP INDUCTORS → FLC160808NLCL : High Current Type

FEATURES

1. Very strong solderability by soldering flow and soldering iron.
2. Highly accurate dimensions , can be mounted automatically.
3. Terminals are highly resistant to pulling force.
4. Highly resistant to mechanical shock and pressure.
5. Highly reliable in environments of sudden temperature change and humidity. Super Q characteristics.



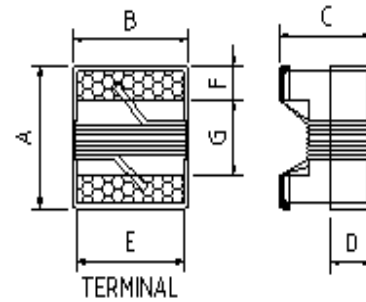
APPLICATIONS

1. Microtelevisions , Liquid Crystal Display, video camera , portable VCRs , car radio , car stereo , thin tape radio , television tuners , mobile telephone, radio and other electronic devices.
2. Modem , OA products , TV sets , VCR , Etc.

ORDERING CODE

FLC160808NLCL R10 M A15 T
 (1) (2) (3) (4) (5)

- (1) PRODUCT TYPE CODE AND SIZE CODE
- (2) INDUCTANCE
- (3) INDUCTANCE TOLERANCE
 (J : ±5%, K : ±10%, M : ±20%, N : ±30%)
- (4) A□□ means HIGH CURRENT RATING
 Example : A03 means 300mA, A13 means 1300mA
- (5) REEL TAPING

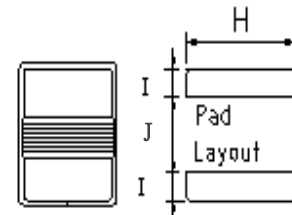
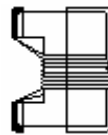


TERMINAL WRAPAROUND :

FLC160808NLCL : Approx. 0.008"/0.20mm BOTH ENDS

FLC201212NLCL : Approx. 0.015"/0.38mm BOTH ENDS

FLC252018NLCL : Approx. 0.015"/0.38mm BOTH ENDS



SHAPE & DIMENSIONS

UNIT:mm (inch)

SIZE CODE	A Max.	B Max.	C Max.	D Ref.	E	F	G	H	I	J
FLC160808NLCL (0603)	1.80 (0.071)	1.22 (0.048)	1.07 (0.042)	0.38 (0.015)	0.90 (0.035)	0.31 (0.012)	0.93 (0.037)	1.02 (0.040)	0.64 (0.025)	0.64 (0.025)
FLC201212NLCL (0805)	2.35 (0.093)	1.78 (0.070)	1.60 (0.063)	0.51 (0.020)	1.27 (0.050)	0.51 (0.020)	1.02 (0.040)	1.78 (0.070)	1.02 (0.040)	0.76 (0.030)
FLC252018NLCL (1008)	2.92 (0.115)	2.79 (0.110)	2.23 (0.088)	0.51 (0.020)	2.03 (0.080)	0.51 (0.020)	1.52 (0.060)	2.54 (0.100)	1.02 (0.040)	1.27 (0.050)

※All the data listed in this catalogue are for reference only, King Core reserves the right to alter or revise the specifications without prior notification.

WOUND CHIP INDUCTORS → FLC160808NLCL : High Current Type

ELECTRICAL CHARACTERISTICS

ORDERING CODE	Inductance (μ H)	Q Min	Test Frequency L/Q(MHz)	SRF (MHz)min	DC Resistance (Ω)max	IDC (mA)max
FLC160808NLCL47NMA16T01	0.047	12	7.96	1500	0.061	1600
FLC160808NLCL72NMA16T01	0.072	12	7.96	1400	0.117	1600
FLC160808NLCLR10MA15T01	0.10	12	7.96	1150	0.142	1500
FLC160808NLCLR12MA15T01	0.12	12	7.96	1100	0.170	1500
FLC160808NLCLR15MA14T01	0.15	15	7.96	1050	0.170	1400
FLC160808NLCLR18MA14T01	0.18	15	7.96	950	0.200	1400
FLC160808NLCLR24MA12T01	0.24	15	7.96	800	0.220	1200
FLC160808NLCLR27MA11T01	0.27	15	7.96	775	0.260	1100
FLC160808NLCLR33MA09T01	0.33	15	7.96	725	0.450	900
FLC160808NLCLR39MA09T01	0.39	15	7.96	620	0.460	900
FLC160808NLCLR47MA09T01	0.47	15	7.96	540	0.470	900
FLC160808NLCLR56MA09T01	0.56	15	7.96	525	0.490	900
FLC160808NLCLR68MA08T01	0.68	15	7.96	260	0.550	800
FLC160808NLCLR78MA08T01	0.78	15	7.96	460	0.730	800
FLC160808NLCLR82MA08T01	0.82	15	7.96	410	0.730	800
FLC160808NLCL1R0MA07T01	1.0	15	7.96	190	0.850	700
FLC160808NLCL1R2MA06T01	1.2	15	7.96	160	0.900	600
FLC160808NLCL1R5MA05T01	1.5	15	7.96	100	1.000	500
FLC160808NLCL1R8MA05T01	1.8	15	7.96	80	1.100	500
FLC160808NLCL2R2MA05T01	2.2	15	7.96	68	1.300	500
FLC160808NLCL2R7MA05T01	2.7	15	7.96	60	1.400	500
FLC160808NLCL3R3MA04T01	3.3	15	7.96	42	1.520	400
FLC160808NLCL3R9MA04T01	3.9	15	7.96	40	1.550	400
FLC160808NLCL4R7MA04T01	4.7	15	7.96	34	1.900	400
FLC160808NLCL5R6MA04T01	5.6	15	7.96	32	2.100	400
FLC160808NLCL6R8MA03T01	6.8	15	7.96	31	2.900	300
FLC160808NLCL7R8MA03T01	7.8	15	7.96	28	3.200	300
FLC160808NLCL8R2MA03T01	8.2	15	7.96	26	3.200	300
FLC160808NLCL100MA03T01	10.0	12	2.52	25	3.800	300

- 1.IDC: (Δ T) within 40°C
- 2.& Inductance drop less than 20% typ.
3. Operating temperature range : -25°C ~ +85°C (including self-heating)

* Design as Customer's Requested Specifications.

※All the data listed in this catalogue are for reference only, King Core reserves the right to alter or revise the specifications without prior notification.



KING CORE ELECTRONICS INC.
Tel:886-3-4698855 Fax:886-3-4691395

No.269,Nanfong Rd.,Pingjhen City,Taoyuan County, Taiwan
E-mail:kc@mail.kingcore.com.tw Web Site:http://www.kingcore.com.tw