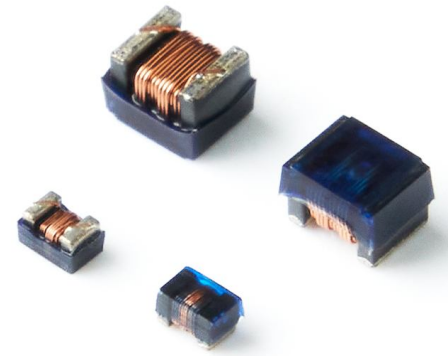


# WOUND CHIP INDUCTORS → FLC201212NLCL : High Current Type

## FEATURES

1. Very strong solderability by soldering flow and soldering iron.
2. Highly accurate dimensions , can be mounted automatically.
3. Terminals are highly resistant to pulling force.
4. Highly resistant to mechanical shock and pressure.
5. Highly reliable in environments of sudden temperature change and humidity. Super Q characteristics.



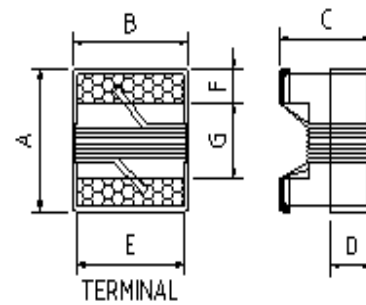
## APPLICATIONS

1. Microtelevisions , Liquid Crystal Display, video camera , portable VCRs , car radio , car stereo , thin tape radio , television tuners , mobile telephone, radio and other electronic devices.
2. Modem , OA products , TV sets , VCR , Etc.

## ORDERING CODE

FLC201212NLCL R33 MA15 T  
 (1) (2) (3) (4) (5)

- (1) PRODUCT TYPE CODE AND SIZE CODE
- (2) INDUCTANCE
- (3) INDUCTANCE TOLERANCE  
 ( J : ±5%, K : ±10%, M : ±20%, N : ±30%)
- (4) A□□ means HIGH CURRENT RATING  
 Example : A03 means 300mA, A13 means 1300mA
- (5) REEL TAPING

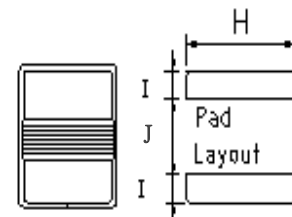
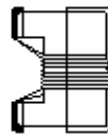


TERMINAL WRAPAROUND :

FLC160808NLCL : Approx. 0.008"/0.20mm BOTH ENDS

FLC201212NLCL : Approx. 0.015"/0.38mm BOTH ENDS

FLC252018NLCL : Approx. 0.015"/0.38mm BOTH ENDS



## SHAPE & DIMENSIONS

UNIT:mm (inch)

SIZE CODE	A Max.	B Max.	C Max.	D Ref.	E	F	G	H	I	J
FLC160808NLCL (0603)	1.80 (0.071)	1.22 (0.048)	1.07 (0.042)	0.38 (0.015)	0.90 (0.035)	0.31 (0.012)	0.93 (0.037)	1.02 (0.040)	0.64 (0.025)	0.64 (0.025)
FLC201212NLCL (0805)	2.35 (0.093)	1.78 (0.070)	1.60 (0.063)	0.51 (0.020)	1.27 (0.050)	0.51 (0.020)	1.02 (0.040)	1.78 (0.070)	1.02 (0.040)	0.76 (0.030)
FLC252018NLCL (1008)	2.92 (0.115)	2.79 (0.110)	2.23 (0.088)	0.51 (0.020)	2.03 (0.080)	0.51 (0.020)	1.52 (0.060)	2.54 (0.100)	1.02 (0.040)	1.27 (0.050)

※All the data listed in this catalogue are for reference only, King Core reserves the right to alter or revise the specifications without prior notification.

# WOUND CHIP INDUCTORS → FLC201212NLCL : High Current Type

## ELECTRICAL CHARACTERISTICS

ORDERING CODE	Inductance	Tolerance	Q	Test Frequency	SRF	DC Resistance	IDC
	( $\mu$ H)	$\pm\%$	Min	L/Q(MHz)	(MHz)TYP	( $\Omega$ )max	(mA)max
FLC201212NLCLR33MA15T01	0.33	20%	15	25.2/7.96	800	0.20	1500
FLC201212NLCLR47MA13T01	0.47	20%	15	25.2/7.96	800	0.25	1300
FLC201212NLCLR56MA12T01	0.56	20%	15	25.2/7.96	600	0.27	1200
FLC201212NLCLR68MA12T01	0.68	20%	15	25.2/7.96	600	0.29	1200
FLC201212NLCLR82MA11T01	0.82	20%	15	25.2/7.96	550	0.32	1100
FLC201212NLCL1R0MA10T01	1.0	20%	15	7.96	200	0.37	1000
FLC201212NLCL1R2MA06T01	1.2	20%	15	7.96	200	0.66	600
FLC201212NLCL1R8MA06T01	1.8	20%	15	7.96	120	0.84	600
FLC201212NLCL2R2MA06T01	2.2	20%	15	7.96	110	0.97	600
FLC201212NLCL2R7MA06T01	2.7	20%	15	7.96	100	1.10	600
FLC201212NLCL3R3MA06T01	3.3	20%	15	7.96	70	1.15	600
FLC201212NLCL3R9MA05T01	3.9	20%	15	7.96	60	1.25	500
FLC201212NLCL4R7MA05T01	4.7	20%	15	7.96	50	1.34	500
FLC201212NLCL5R6MA04T01	5.6	20%	15	7.96	45	1.64	400
FLC201212NLCL6R8MA04T01	6.8	20%	15	7.96	45	1.75	400
FLC201212NLCL8R2MA04T01	8.2	20%	15	7.96	40	1.85	400
FLC201212NLCL100MA03T01	10	20%	15	2.52	35	2.07	300
FLC201212NLCL120MA03T01	12	20%	15	2.52	25	2.35	300
FLC201212NLCL150MA028T01	15	20%	15	2.52	23	2.67	280
FLC201212NLCL180MA028T01	18	20%	15	2.52	21	3.00	280
FLC201212NLCL220MA025T01	22	20%	15	2.52	20	4.10	250
FLC201212NLCL270MA022T01	27	20%	15	2.52	18	4.60	220
FLC201212NLCL330MA02T01	33	20%	15	2.52	17	5.10	200
FLC201212NLCL390MA018T01	39	20%	15	2.52	15	7.10	180
FLC201212NLCL470MA015T01	47	20%	15	2.52	15	7.60	150

1.IDC: ( $\Delta$ T) within 40°C

2.& Inductance drop less than 20% typ.

3. Operating temperature range : -25°C ~ +85°C (including self-heating)

\* Design as Customer's Requested Specifications.

※All the data listed in this catalogue are for reference only, King Core reserves the right to alter or revise the specifications without prior notification.



**KING CORE ELECTRONICS INC.**  
Tel:886-3-4698855 Fax:886-3-4691395

No.269,Nanfong Rd.,Pingjhen City,Taoyuan County, Taiwan  
E-mail:kc@mail.kingcore.com.tw Web Site:http://www.kingcore.com.tw