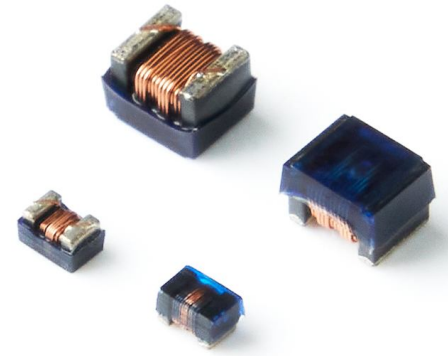


# SPECIFICATION OF FLC□□□□□NLCL SERIES

## FEATURES

1. Very strong solderability by flow soldering , soldering iron.
2. Highly accurate dimensions , can be mounted automatically.
3. Terminals are highly resistant to pull forces.
4. Highly resistant to mechanical shocks and pressure.
5. Highly reliable in environments of sudden temperature change and humidity. Super Q characteristics.



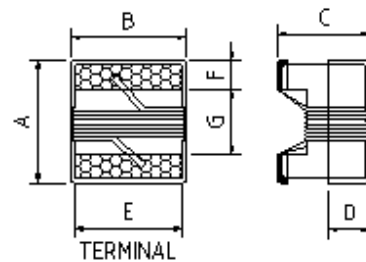
## APPLICATIONS

1. Microtelevisions , liquid crystal televisions , video cameras , portable VCRs , car radios , car stereos , thin tape radios , television tuners , mobile telephones , radio and other electronic devices.
2. Modems , OA products , TV set , VCR , Etc.

## ORDERING CODE

**FLC160808NLCL 1R0 K T**  
(1)                      (2) (3) (4)

- (1) PRODUCT TYPE CODE AND SIZE CODE  
 (2) INDUCTANCE  
 (3) INDUCTANCE TOLERANCE  
 ( J : ±5%, K : ±10%, M : ±20%)  
 (4) REEL TAPING

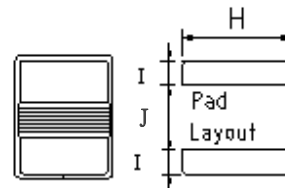
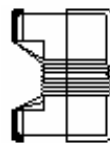


TERMINAL WRAPAROUND :

FLC160808NLCL : Approx. 0.008"/0.20mm BOTH ENDS

FLC201212NLCL : Approx. 0.015"/0.38mm BOTH ENDS

FLC252018NLCL : Approx. 0.015"/0.38mm BOTH ENDS



## SHAPE & DIMENSIONS

UNIT:mm (inch)

SIZE CODE	A Max.	B Max.	C Max.	D Ref.	E	F	G	H	I	J
FLC160808NLCL (0603)	1.80 (0.071)	1.22 (0.048)	1.07 (0.042)	0.38 (0.015)	0.90 (0.035)	0.31 (0.012)	0.93 (0.037)	1.02 (0.040)	0.64 (0.025)	0.64 (0.025)
FLC201212NLCL (0805)	2.35 (0.093)	1.78 (0.070)	1.60 (0.063)	0.51 (0.020)	1.27 (0.050)	0.51 (0.020)	1.02 (0.040)	1.78 (0.070)	1.02 (0.040)	0.76 (0.030)
FLC252018NLCL (1008)	2.92 (0.115)	2.79 (0.110)	2.23 (0.088)	0.51 (0.020)	2.03 (0.080)	0.51 (0.020)	1.52 (0.060)	2.54 (0.100)	1.02 (0.040)	1.27 (0.050)

※All the data listed in this catalogue are for reference only, King Core reserves the right to alter or revise the specifications without prior notification.

# WOUND CHIP INDUCTORS → FLC160808NLCL SERIES

## ELECTRICAL CHARACTERISTICS

ORDERING CODE	Inductance ( $\mu$ H)	Q Min	Test Frequency L/Q(MHz)	SRF (MHz)min	DC Resistance ( $\Omega$ )max	IDC (mA)max
FLC160808NLCL47N□T	0.047	12	7.96	1500	0.075	1400
FLC160808NLCL72N□T	0.072	12	7.96	1400	0.120	1400
FLC160808NLCLR10□T	0.10	12	7.96	1150	0.130	1400
FLC160808NLCLR12□T	0.12	12	7.96	1100	0.150	1400
FLC160808NLCLR15□T	0.15	15	7.96	1050	0.150	1300
FLC160808NLCLR18□T	0.18	15	7.96	950	0.150	1300
FLC160808NLCLR24□T	0.24	15	7.96	800	0.160	950
FLC160808NLCLR27□T	0.27	15	7.96	775	0.300	710
FLC160808NLCLR33□T	0.33	15	7.96	725	0.460	560
FLC160808NLCLR39□T	0.39	15	7.96	620	0.510	500
FLC160808NLCLR47□T	0.47	15	7.96	540	0.620	420
FLC160808NLCLR56□T	0.56	15	7.96	525	0.440	550
FLC160808NLCLR68□T	0.68	15	7.96	260	0.520	470
FLC160808NLCLR78□T	0.78	15	7.96	460	0.830	390
FLC160808NLCLR82□T	0.82	15	7.96	410	0.690	400
FLC160808NLCL1R0□T	1.0	15	7.96	190	0.810	400
FLC160808NLCL1R2□T	1.2	15	7.96	160	0.870	370
FLC160808NLCL1R5□T	1.5	15	7.96	100	0.960	350
FLC160808NLCL1R8□T	1.8	15	7.96	80	1.100	350
FLC160808NLCL2R2□T	2.2	15	7.96	68	1.200	320
FLC160808NLCL2R7□T	2.7	15	7.96	60	1.500	280
FLC160808NLCL3R3□T	3.3	15	7.96	42	1.500	280
FLC160808NLCL3R9□T	3.9	15	7.96	40	1.600	280
FLC160808NLCL4R7□T	4.7	15	7.96	34	2.100	260
FLC160808NLCL5R6□T	5.6	15	7.96	32	2.600	240
FLC160808NLCL6R8□T	6.8	15	7.96	31	3.100	200
FLC160808NLCL7R8□T	7.8	15	7.96	28	3.500	200
FLC160808NLCL8R2□T	8.2	15	7.96	26	3.600	190
FLC160808NLCL100□T	10.0	12	2.52	25	4.800	180

1. When ordering, please specify tolerance and packaging codes. Ex: FLC160808NLCL1R0KT
2. □ Means the inductance tolerance, Tolerance : J = 5% , K = 10% , M = 20%
3. Operating temperature range : -25°C ~ +85°C (including self-heating)

※All the data listed in this catalogue are for reference only, King Core reserves the right to alter or revise the specifications without prior notification.



**KING CORE ELECTRONICS INC.**  
Tel:886-3-4698855 Fax:886-3-4691395

No.269,Nanfong Rd.,Pingjhen City,Taoyuan County, Taiwan  
E-mail:kc@mail.kingcore.com.tw Web Site:http://www.kingcore.com.tw

# WOUND CHIP INDUCTORS → FLC201212NLCL SERIES

## ELECTRICAL CHARACTERISTICS

ORDERING CODE	Inductance ( $\mu$ H)	Q Min	Test Frequency L/Q(MHz)	SRF (MHz)min	DC Resistance ( $\Omega$ )max	IDC (mA)max
FLC201212NLCLR47□T	0.47	45	25.2/100	375	0.95	500
FLC201212NLCLR56□T	0.56	45	25.2/100	340	1.10	450
FLC201212NLCLR68□T	0.68	35	25.2/100	188	1.20	400
FLC201212NLCLR82□T	0.82	35	25.2/100	215	1.50	300
FLC201212NLCL1R0□T	1.0	15	7.96	200	2.13	180
FLC201212NLCL1R2□T	1.2	15	7.96	200	2.38	150
FLC201212NLCL1R5□T	1.5	15	7.96	200	2.90	130
FLC201212NLCL1R8□T	1.8	15	7.96	120	3.00	120
FLC201212NLCL2R2□T	2.2	15	7.96	110	3.10	110
FLC201212NLCL2R7□T	2.7	15	7.96	100	3.50	100
FLC201212NLCL3R3□T	3.3	15	7.96	70	2.30	210
FLC201212NLCL3R9□T	3.9	15	7.96	60	2.50	200
FLC201212NLCL4R7□T	4.7	15	7.96	50	2.80	180
FLC201212NLCL5R6□T	5.6	15	7.96	45	3.00	160
FLC201212NLCL6R8□T	6.8	15	7.96	45	3.20	130
FLC201212NLCL8R2□T	8.2	15	7.96	40	3.50	120
FLC201212NLCL100□T	10.0	15	2.52	35	5.00	80
FLC201212NLCL120□T	12.0	15	2.52	25	5.00	80
FLC201212NLCL150□T	15.0	15	2.52	23	5.00	80
FLC201212NLCL180□T	18.0	15	2.52	21	5.50	75
FLC201212NLCL220□T	22.0	15	2.52	20	8.00	75
FLC201212NLCL270□T	27.0	15	2.52	18	9.00	70
FLC201212NLCL330□T	33.0	15	2.52	17	10.00	70
FLC201212NLCL390□T	39.0	15	2.52	15	12.00	65
FLC201212NLCL470□T	47.0	15	2.52	15	13.00	65

1. When ordering, please specify tolerance and packaging codes. Ex: FLC201212NLCL1R0KT
2. □ Means the inductance tolerance, Tolerance : J = 5% , K = 10% , M = 20%
3. Operating temperature range : -25°C ~ +85°C (including self-heating)

※All the data listed in this catalogue are for reference only, King Core reserves the right to alter or revise the specifications without prior notification.



**KING CORE ELECTRONICS INC.**  
 Tel: 886-3-4698855 Fax: 886-3-4691395

No.269, Nanfong Rd., Pingjhen City, Taoyuan County, Taiwan  
 E-mail: kc@mail.kingcore.com.tw Web Site: http://www.kingcore.com.tw

# WOUND CHIP INDUCTORS → FLC252018NLCL SERIES

## ELECTRICAL CHARACTERISTICS

ORDERING CODE	Inductance ( $\mu$ H)	Q Min	Test Frequency L/Q(MHz)	SRF (MHz)min	DC Resistance ( $\Omega$ )max	IDC (mA)max
FLC252018NLCLR47□T	0.47	25	25.2/100	375	0.95	500
FLC252018NLCLR56□T	0.56	25	25.2/100	340	1.10	450
FLC252018NLCLR68□T	0.68	25	25.2/100	188	1.20	400
FLC252018NLCLR82□T	0.82	25	25.2/100	215	1.50	300
FLC252018NLCL1R0□T	1.0	15	7.96	200	2.13	180
FLC252018NLCL1R2□T	1.2	20	7.96	280	1.30	230
FLC252018NLCL1R5□T	1.5	20	7.96	250	1.65	220
FLC252018NLCL1R8□T	1.8	20	7.96	200	2.20	210
FLC252018NLCL2R2□T	2.2	20	7.96	160	2.35	200
FLC252018NLCL2R7□T	2.7	20	7.96	130	2.60	195
FLC252018NLCL3R3□T	3.3	20	7.96	80	2.85	185
FLC252018NLCL3R9□T	3.9	20	7.96	50	4.00	180
FLC252018NLCL4R7□T	4.7	12	7.96	45	4.30	175
FLC252018NLCL5R6□T	5.6	20	7.96	42	2.60	170
FLC252018NLCL6R8□T	6.8	20	7.96	39	2.80	165
FLC252018NLCL8R2□T	8.2	15	7.96	36	3.05	160
FLC252018NLCL100□T	10.0	15	2.52	33	3.50	150
FLC252018NLCL120□T	12.0	15	2.52	30	3.60	140
FLC252018NLCL150□T	15.0	15	2.52	26	4.00	130
FLC252018NLCL180□T	18.0	15	2.52	24	4.50	120
FLC252018NLCL220□T	22.0	15	2.52	22	4.80	110
FLC252018NLCL270□T	27.0	15	2.52	21	5.30	95
FLC252018NLCL330□T	33.0	15	2.52	20	6.10	85
FLC252018NLCL390□T	39.0	15	2.52	18	8.30	60
FLC252018NLCL470□T	47.0	15	2.52	17	12.00	45

1. When ordering, please specify tolerance and packaging codes. Ex: FLC252018NLCL1R0KT

2. □ Means the inductance tolerance, Tolerance : J = 5% , K = 10% , M = 20%

3. Operating temperature range : -25°C ~ +85°C (including self-heating)

※All the data listed in this catalogue are for reference only, King Core reserves the right to alter or revise the specifications without prior notification.