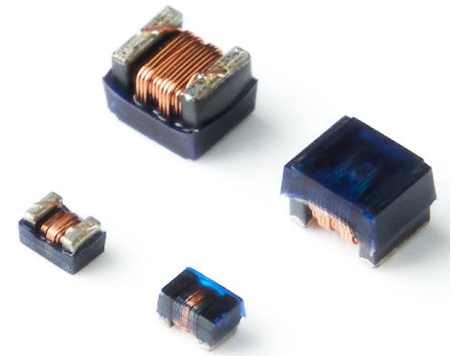


SPECIFICATION OF FLC□□□□□NLCL SERIES

FEATURES

1. Very strong solderability by flow soldering , soldering iron.
2. Highly accurate dimensions , can be mounted automatically.
3. Terminals are highly resistant to pull forces.
4. Highly resistant to mechanical shocks and pressure.
5. Highly reliable in environments of sudden temperature change and humidity. Super Q characteristics.



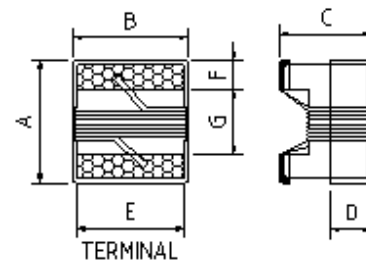
APPLICATIONS

1. Microtelevisions , liquid crystal televisions , video cameras , portable VCRs , car radios , car stereos , thin tape radios , television tuners , mobile telephones , radio and other electronic devices.
2. Modems , OA products , TV set , VCR , Etc.

ORDERING CODE

FLC160808NLCL 1R0 K T
(1) (2) (3) (4)

- (1) PRODUCT TYPE CODE AND SIZE CODE
 (2) INDUCTANCE
 (3) INDUCTANCE TOLERANCE
 (J : ±5%, K : ±10%, M : ±20%)
 (4) REEL TAPING

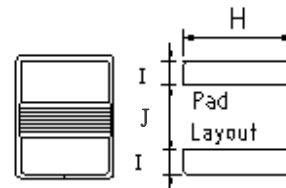
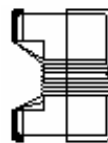


TERMINAL WRAPAROUND :

FLC160808NLCL : Approx. 0.008"/0.20mm BOTH ENDS

FLC201212NLCL : Approx. 0.015"/0.38mm BOTH ENDS

FLC252018NLCL : Approx. 0.015"/0.38mm BOTH ENDS



SHAPE & DIMENSIONS

UNIT:mm (inch)

SIZE CODE	A Max.	B Max.	C Max.	D Ref.	E	F	G	H	I	J
FLC160808NLCL (0603)	1.80 (0.071)	1.22 (0.048)	1.07 (0.042)	0.38 (0.015)	0.90 (0.035)	0.31 (0.012)	0.93 (0.037)	1.02 (0.040)	0.64 (0.025)	0.64 (0.025)
FLC201212NLCL (0805)	2.35 (0.093)	1.78 (0.070)	1.60 (0.063)	0.51 (0.020)	1.27 (0.050)	0.51 (0.020)	1.02 (0.040)	1.78 (0.070)	1.02 (0.040)	0.76 (0.030)
FLC252018NLCL (1008)	2.92 (0.115)	2.79 (0.110)	2.23 (0.088)	0.51 (0.020)	2.03 (0.080)	0.51 (0.020)	1.52 (0.060)	2.54 (0.100)	1.02 (0.040)	1.27 (0.050)

※All the data listed in this catalogue are for reference only, King Core reserves the right to alter or revise the specifications without prior notification.

WOUND CHIP INDUCTORS → FLC160808NLCL SERIES

ELECTRICAL CHARACTERISTICS

ORDERING CODE	Inductance (μ H)	Q Min	Test Frequency L/Q(MHz)	SRF (MHz)min	DC Resistance (Ω)max	IDC (mA)max
FLC160808NLCL47N□T	0.047	12	7.96	1500	0.075	1400
FLC160808NLCL72N□T	0.072	12	7.96	1400	0.120	1400
FLC160808NLCLR10□T	0.10	12	7.96	1150	0.130	1400
FLC160808NLCLR12□T	0.12	12	7.96	1100	0.150	1400
FLC160808NLCLR15□T	0.15	15	7.96	1050	0.150	1300
FLC160808NLCLR18□T	0.18	15	7.96	950	0.150	1300
FLC160808NLCLR24□T	0.24	15	7.96	800	0.160	950
FLC160808NLCLR27□T	0.27	15	7.96	775	0.300	710
FLC160808NLCLR33□T	0.33	15	7.96	725	0.460	560
FLC160808NLCLR39□T	0.39	15	7.96	620	0.510	500
FLC160808NLCLR47□T	0.47	15	7.96	540	0.620	420
FLC160808NLCLR56□T	0.56	15	7.96	525	0.440	550
FLC160808NLCLR68□T	0.68	15	7.96	260	0.520	470
FLC160808NLCLR78□T	0.78	15	7.96	460	0.830	390
FLC160808NLCLR82□T	0.82	15	7.96	410	0.690	400
FLC160808NLCL1R0□T	1.0	15	7.96	190	0.810	400
FLC160808NLCL1R2□T	1.2	15	7.96	160	0.870	370
FLC160808NLCL1R5□T	1.5	15	7.96	100	0.960	350
FLC160808NLCL1R8□T	1.8	15	7.96	80	1.100	350
FLC160808NLCL2R2□T	2.2	15	7.96	68	1.200	320
FLC160808NLCL2R7□T	2.7	15	7.96	60	1.500	280
FLC160808NLCL3R3□T	3.3	15	7.96	42	1.500	280
FLC160808NLCL3R9□T	3.9	15	7.96	40	1.600	280
FLC160808NLCL4R7□T	4.7	15	7.96	34	2.100	260
FLC160808NLCL5R6□T	5.6	15	7.96	32	2.600	240
FLC160808NLCL6R8□T	6.8	15	7.96	31	3.100	200
FLC160808NLCL7R8□T	7.8	15	7.96	28	3.500	200
FLC160808NLCL8R2□T	8.2	15	7.96	26	3.600	190
FLC160808NLCL100□T	10.0	12	2.52	25	4.800	180

1. When ordering, please specify tolerance and packaging codes. Ex: FLC160808NLCL1R0KT
2. □ Means the inductance tolerance, Tolerance : J = 5% , K = 10% , M = 20%
3. Operating temperature range : -25°C ~ +85°C (including self-heating)

※All the data listed in this catalogue are for reference only, King Core reserves the right to alter or revise the specifications without prior notification.



KING CORE ELECTRONICS INC.
Tel:886-3-4698855 Fax:886-3-4691395

No.269,Nanfong Rd.,Pingjhen City,Taoyuan County, Taiwan
E-mail:kc@mail.kingcore.com.tw Web Site:http://www.kingcore.com.tw