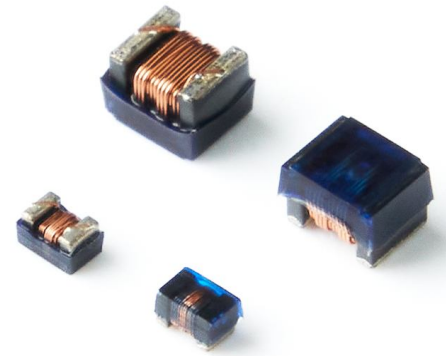


SPECIFICATION OF FLC□□□□□NLCL SERIES

FEATURES

1. Very strong solderability by flow soldering , soldering iron.
2. Highly accurate dimensions , can be mounted automatically.
3. Terminals are highly resistant to pull forces.
4. Highly resistant to mechanical shocks and pressure.
5. Highly reliable in environments of sudden temperature change and humidity. Super Q characteristics.



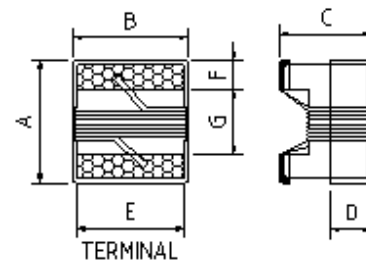
APPLICATIONS

1. Microtelevisions , liquid crystal televisions , video cameras , portable VCRs , car radios , car stereos , thin tape radios , television tuners , mobile telephones , radio and other electronic devices.
2. Modems , OA products , TV set , VCR , Etc.

ORDERING CODE

FLC201212NLCL 1R0 K T
 (1) (2) (3) (4)

- (1) PRODUCT TYPE CODE AND SIZE CODE
- (2) INDUCTANCE
- (3) INDUCTANCE TOLERANCE
 (J : ±5%, K : ±10%, M : ±20%)
- (4) REEL TAPING

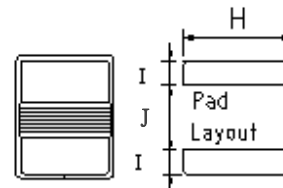
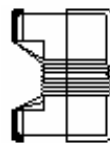


TERMINAL WRAPAROUND :

FLC160808NLCL : Approx. 0.008"/0.20mm BOTH ENDS

FLC201212NLCL : Approx. 0.015"/0.38mm BOTH ENDS

FLC252018NLCL : Approx. 0.015"/0.38mm BOTH ENDS



SHAPE & DIMENSIONS

UNIT:mm (inch)

SIZE CODE	A Max.	B Max.	C Max.	D Ref.	E	F	G	H	I	J
FLC160808NLCL (0603)	1.80 (0.071)	1.22 (0.048)	1.07 (0.042)	0.38 (0.015)	0.90 (0.035)	0.31 (0.012)	0.93 (0.037)	1.02 (0.040)	0.64 (0.025)	0.64 (0.025)
FLC201212NLCL (0805)	2.35 (0.093)	1.78 (0.070)	1.60 (0.063)	0.51 (0.020)	1.27 (0.050)	0.51 (0.020)	1.02 (0.040)	1.78 (0.070)	1.02 (0.040)	0.76 (0.030)
FLC252018NLCL (1008)	2.92 (0.115)	2.79 (0.110)	2.23 (0.088)	0.51 (0.020)	2.03 (0.080)	0.51 (0.020)	1.52 (0.060)	2.54 (0.100)	1.02 (0.040)	1.27 (0.050)

※All the data listed in this catalogue are for reference only, King Core reserves the right to alter or revise the specifications without prior notification.

WOUND CHIP INDUCTORS → FLC201212NLCL SERIES

ELECTRICAL CHARACTERISTICS

ORDERING CODE	Inductance (μ H)	Q Min	Test Frequency L/Q(MHz)	SRF (MHz)min	DC Resistance (Ω)max	IDC (mA)max
FLC201212NLCLR47□T	0.47	45	25.2/100	375	0.95	500
FLC201212NLCLR56□T	0.56	45	25.2/100	340	1.10	450
FLC201212NLCLR68□T	0.68	35	25.2/100	188	1.20	400
FLC201212NLCLR82□T	0.82	35	25.2/100	215	1.50	300
FLC201212NLCL1R0□T	1.0	15	7.96	200	2.13	180
FLC201212NLCL1R2□T	1.2	15	7.96	200	2.38	150
FLC201212NLCL1R5□T	1.5	15	7.96	200	2.90	130
FLC201212NLCL1R8□T	1.8	15	7.96	120	3.00	120
FLC201212NLCL2R2□T	2.2	15	7.96	110	3.10	110
FLC201212NLCL2R7□T	2.7	15	7.96	100	3.50	100
FLC201212NLCL3R3□T	3.3	15	7.96	70	2.30	210
FLC201212NLCL3R9□T	3.9	15	7.96	60	2.50	200
FLC201212NLCL4R7□T	4.7	15	7.96	50	2.80	180
FLC201212NLCL5R6□T	5.6	15	7.96	45	3.00	160
FLC201212NLCL6R8□T	6.8	15	7.96	45	3.20	130
FLC201212NLCL8R2□T	8.2	15	7.96	40	3.50	120
FLC201212NLCL100□T	10.0	15	2.52	35	5.00	80
FLC201212NLCL120□T	12.0	15	2.52	25	5.00	80
FLC201212NLCL150□T	15.0	15	2.52	23	5.00	80
FLC201212NLCL180□T	18.0	15	2.52	21	5.50	75
FLC201212NLCL220□T	22.0	15	2.52	20	8.00	75
FLC201212NLCL270□T	27.0	15	2.52	18	9.00	70
FLC201212NLCL330□T	33.0	15	2.52	17	10.00	70
FLC201212NLCL390□T	39.0	15	2.52	15	12.00	65
FLC201212NLCL470□T	47.0	15	2.52	15	13.00	65

1. When ordering, please specify tolerance and packaging codes. Ex: FLC201212NLCL1R0KT

2. □ Means the inductance tolerance, Tolerance : J = 5% , K = 10% , M = 20%

3. Operating temperature range : -25°C ~ +85°C (including self-heating)

※All the data listed in this catalogue are for reference only, King Core reserves the right to alter or revise the specifications without prior notification.



KING CORE ELECTRONICS INC.
Tel:886-3-4698855 Fax:886-3-4691395

No.269,Nanfong Rd.,Pingjhen City,Taoyuan County, Taiwan
E-mail:kc@mail.kingcore.com.tw Web Site:http://www.kingcore.com.tw