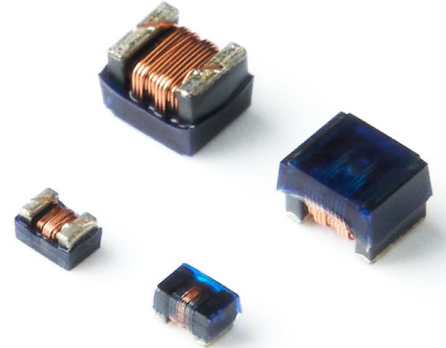


SPECIFICATION OF FLC□□□□□NLCL SERIES

FEATURES

1. Very strong solderability by flow soldering , soldering iron.
2. Highly accurate dimensions , can be mounted automatically.
3. Terminals are highly resistant to pull forces.
4. Highly resistant to mechanical shocks and pressure.
5. Highly reliable in environments of sudden temperature change and humidity. Super Q characteristics.



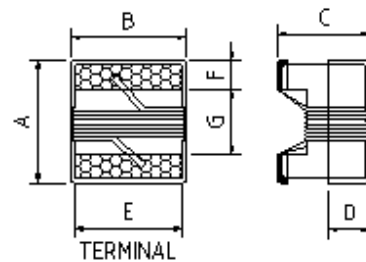
APPLICATIONS

1. Microtelevisions , liquid crystal televisions , video cameras , portable VCRs , car radios , car stereos , thin tape radios , television tuners , mobile telephones , radio and other electronic devices.
2. Modems , OA products , TV set , VCR , Etc.

ORDERING CODE

FLC252018NLCL 1R0 K T
 (1) (2) (3) (4)

- (1) PRODUCT TYPE CODE AND SIZE CODE
 (2) INDUCTANCE
 (3) INDUCTANCE TOLERANCE
 (J : ±5%, K : ±10%, M : ±20%)
 (4) REEL TAPING

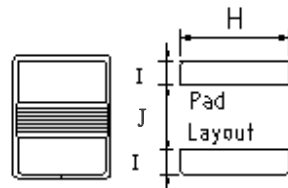
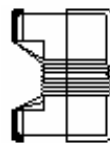


TERMINAL WRAPAROUND :

FLC160808NLCL : Approx. 0.008"/0.20mm BOTH ENDS

FLC201212NLCL : Approx. 0.015"/0.38mm BOTH ENDS

FLC252018NLCL : Approx. 0.015"/0.38mm BOTH ENDS



SHAPE & DIMENSIONS

UNIT:mm (inch)

SIZE CODE	A Max.	B Max.	C Max.	D Ref.	E	F	G	H	I	J
FLC160808NLCL (0603)	1.80 (0.071)	1.22 (0.048)	1.07 (0.042)	0.38 (0.015)	0.90 (0.035)	0.31 (0.012)	0.93 (0.037)	1.02 (0.040)	0.64 (0.025)	0.64 (0.025)
FLC201212NLCL (0805)	2.35 (0.093)	1.78 (0.070)	1.60 (0.063)	0.51 (0.020)	1.27 (0.050)	0.51 (0.020)	1.02 (0.040)	1.78 (0.070)	1.02 (0.040)	0.76 (0.030)
FLC252018NLCL (1008)	2.92 (0.115)	2.79 (0.110)	2.23 (0.088)	0.51 (0.020)	2.03 (0.080)	0.51 (0.020)	1.52 (0.060)	2.54 (0.100)	1.02 (0.040)	1.27 (0.050)

※All the data listed in this catalogue are for reference only, King Core reserves the right to alter or revise the specifications without prior notification.

WOUND CHIP INDUCTORS → FLC252018NLCL SERIES

ELECTRICAL CHARACTERISTICS

ORDERING CODE	Inductance (μ H)	Q Min	Test Frequency L/Q(MHz)	SRF (MHz)min	DC Resistance (Ω)max	IDC (mA)max
FLC252018NLCLR47□T	0.47	25	25.2/100	375	0.95	500
FLC252018NLCLR56□T	0.56	25	25.2/100	340	1.10	450
FLC252018NLCLR68□T	0.68	25	25.2/100	188	1.20	400
FLC252018NLCLR82□T	0.82	25	25.2/100	215	1.50	300
FLC252018NLCL1R0□T	1.0	15	7.96	200	2.13	180
FLC252018NLCL1R2□T	1.2	20	7.96	280	1.30	230
FLC252018NLCL1R5□T	1.5	20	7.96	250	1.65	220
FLC252018NLCL1R8□T	1.8	20	7.96	200	2.20	210
FLC252018NLCL2R2□T	2.2	20	7.96	160	2.35	200
FLC252018NLCL2R7□T	2.7	20	7.96	130	2.60	195
FLC252018NLCL3R3□T	3.3	20	7.96	80	2.85	185
FLC252018NLCL3R9□T	3.9	20	7.96	50	4.00	180
FLC252018NLCL4R7□T	4.7	12	7.96	45	4.30	175
FLC252018NLCL5R6□T	5.6	20	7.96	42	2.60	170
FLC252018NLCL6R8□T	6.8	20	7.96	39	2.80	165
FLC252018NLCL8R2□T	8.2	15	7.96	36	3.05	160
FLC252018NLCL100□T	10.0	15	2.52	33	3.50	150
FLC252018NLCL120□T	12.0	15	2.52	30	3.60	140
FLC252018NLCL150□T	15.0	15	2.52	26	4.00	130
FLC252018NLCL180□T	18.0	15	2.52	24	4.50	120
FLC252018NLCL220□T	22.0	15	2.52	22	4.80	110
FLC252018NLCL270□T	27.0	15	2.52	21	5.30	95
FLC252018NLCL330□T	33.0	15	2.52	20	6.10	85
FLC252018NLCL390□T	39.0	15	2.52	18	8.30	60
FLC252018NLCL470□T	47.0	15	2.52	17	12.00	45

1. When ordering, please specify tolerance and packaging codes. Ex: FLC252018NLCL1R0KT
2. □ Means the inductance tolerance, Tolerance : J = 5% , K = 10% , M = 20%
3. Operating temperature range : -25°C ~ +85°C (including self-heating)

※All the data listed in this catalogue are for reference only, King Core reserves the right to alter or revise the specifications without prior notification.



KING CORE ELECTRONICS INC.
 Tel: 886-3-4698855 Fax: 886-3-4691395

No.269, Nanfong Rd., Pingjhen City, Taoyuan County, Taiwan
 E-mail: kc@mail.kingcore.com.tw Web Site: http://www.kingcore.com.tw