

# SPECIFICATION OF FP SERIES

## APPLICATIONS

The split ferrites are used for EMI suppression on flat cable assemblies.

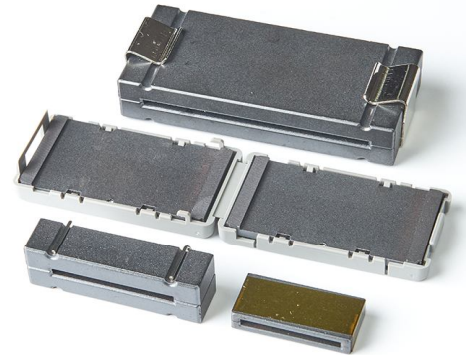
- \* Internal floppy disk and hard disk ribbon cables
- \* Internal ribbon cables between circuit boards and data connectors.
- \* Internal ribbon cables with 8,16,32 or 64 bit digital signal busses.



## ORDERING CODE

K5B FP 63.5 x 6.35 x 28.5 - □  
 (1) (2) (3) (4) (5) (6)

- (1) MATERIAL
- (2) PRODUCT CODE
- (3) A DIM.
- (4) B DIM.
- (5) C DIM.
- (6) PROCESSED CODE



## SHAPE

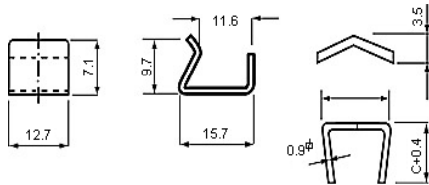


FIG. Metal Clip

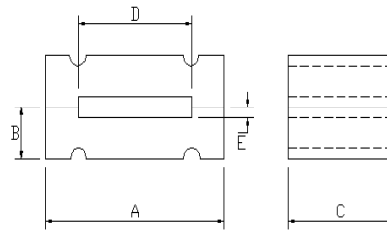


FIG 1

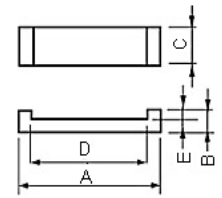


FIG 2

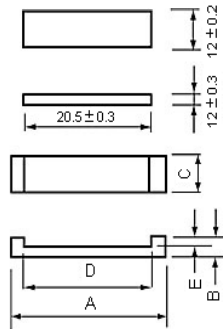


FIG 3

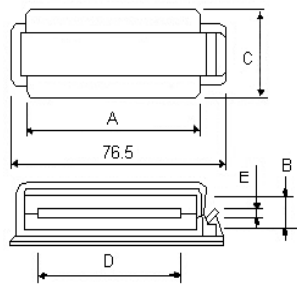


FIG 4

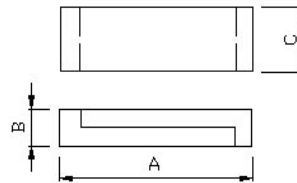


FIG 5

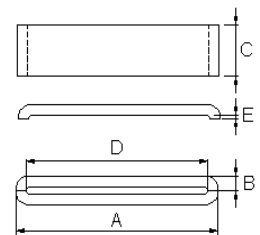


FIG 6

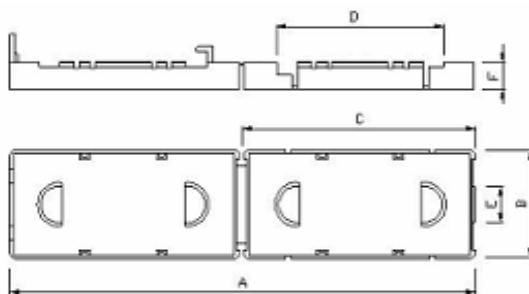


FIG 7

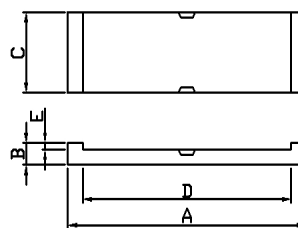


FIG 8

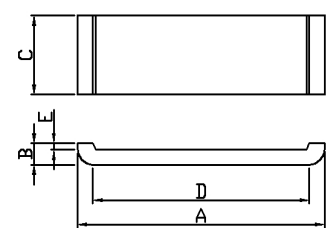


FIG 9

## DIMENSIONS & CHARACTERISTICS

UNIT:mm

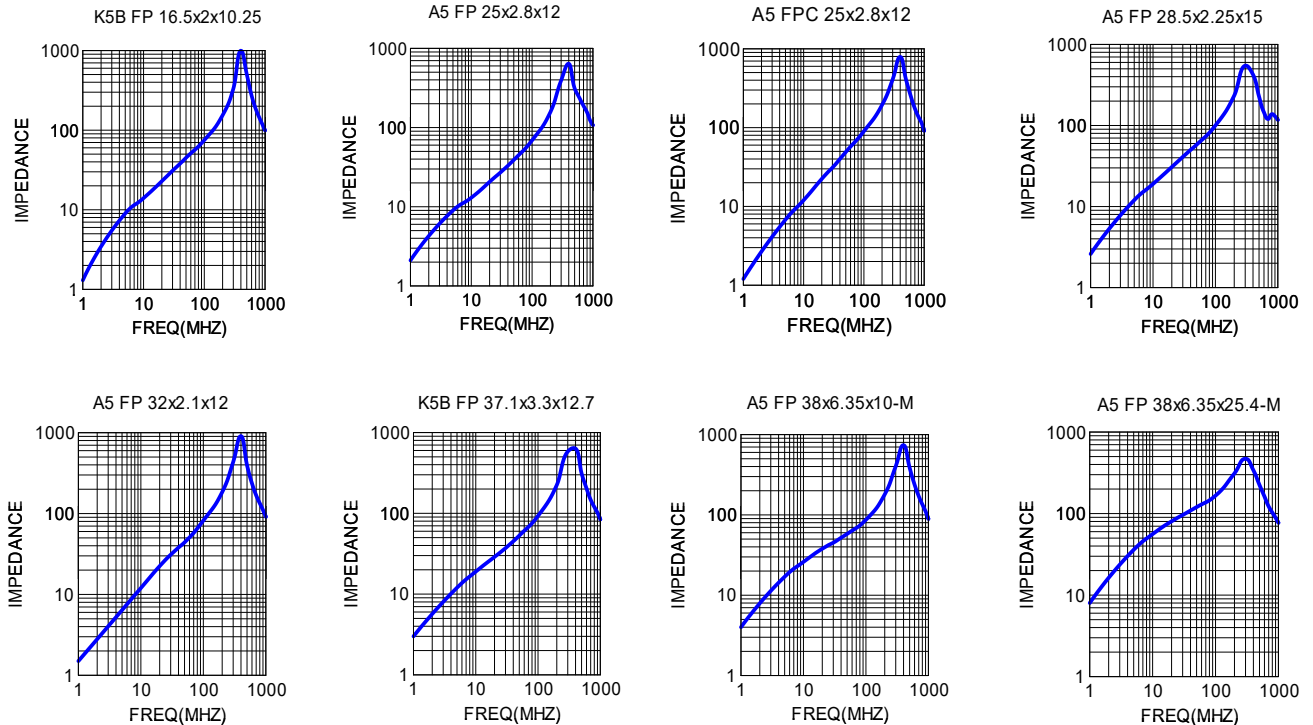
NO.	ORDERING CODE	A	B	C	D	E	Fig
1	FP 16.5x2x10.25	16.50±0.30	2.00±0.20	10.25±0.40	12.50±0.30	0.60±0.20	2
2	FP 25x2.8x12	25.00(+0.50/-0.30)	2.80(+0.00/-0.40)	12.00±0.30	21.00(+0.50/-0.20)	1.10±0.30	2
3	FPC 25x2.8x12	25.00(+0.50/-0.30)	2.80(+0.00/-0.40)	12.00±0.30	21.00(+0.50/-0.20)	1.10±0.30	3

※Other sizes are available upon request.

※All the data listed in this catalogue are for reference only, King Core reserves the right to alter or revise the specifications without prior notification.

# SPECIFICATION OF FP SERIES

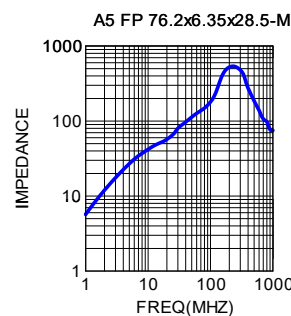
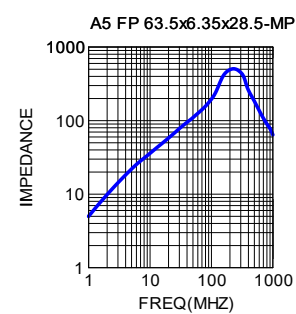
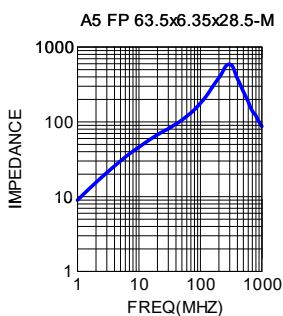
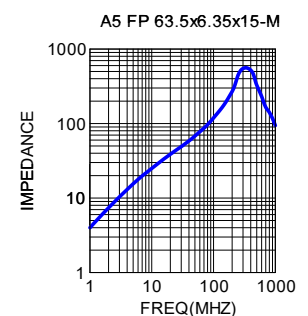
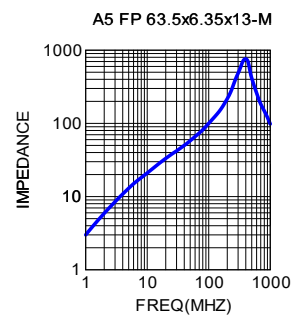
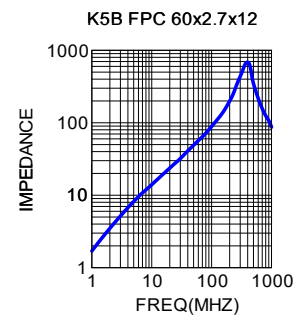
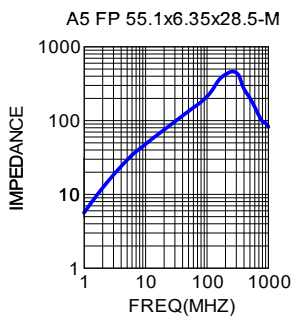
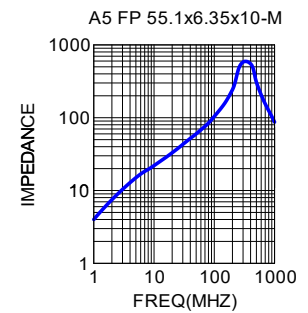
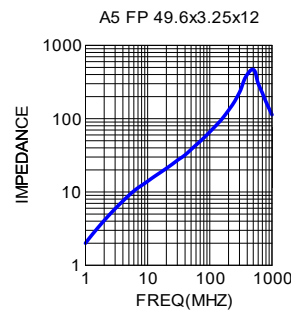
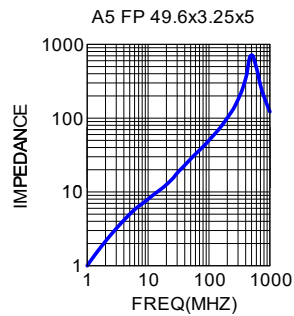
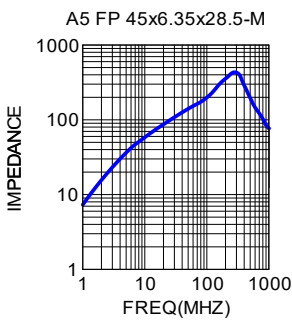
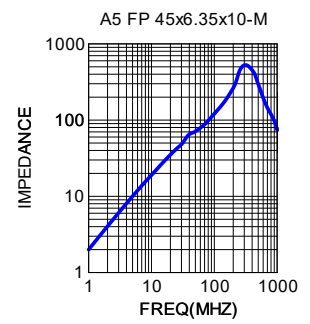
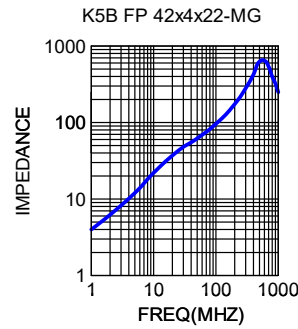
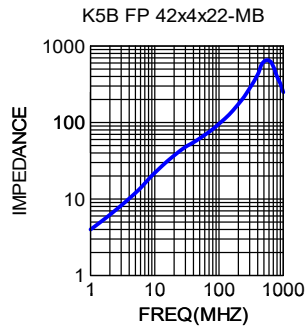
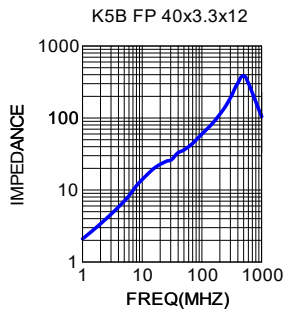
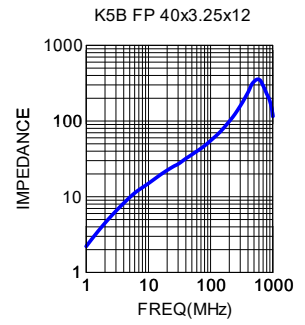
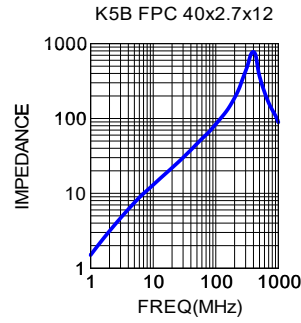
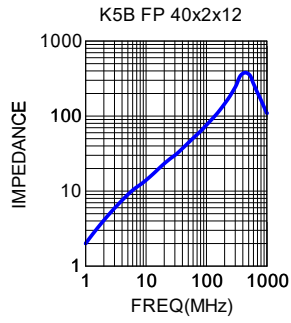
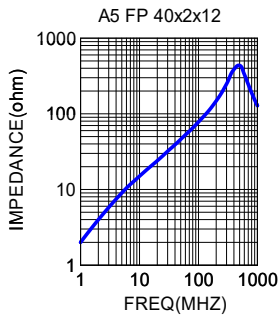
NO.	ORDERING CODE		A	B	C	D	E	Fig
4	FP 28.5x2.25x15		28.50±1.00	2.25±0.20	15.00±0.50	23.50±0.70	0.42±0.10	6
5	FP 32x2.1x12		32.00±1.00	2.10±0.20	12.00±0.50	27.00±0.70	0.40±0.20	2
6	FP 37.1x3.3x12.7		37.10±1.00	3.30±0.20	12.70±0.50	32.00±0.70	0.90±0.20	2
7	FP 38x6.35x10	M	38.00±1.00	6.35±0.25	10.00±0.40	26.60±0.70	0.80±0.20	1
8	FP 38x6.35x25.4	M	38.00±1.00	6.35±0.25	25.40±0.70	26.60±0.70	0.80±0.20	1
9	FP 40x2x12		40.00±1.00	2.00±0.20	12.00±0.60	35.00±1.00	0.50(+0.40/-0.30)	6
10	FPC 40x2.7x12		40.00±1.00	2.70±0.20	12.00±0.50	-	-	5
11	FP 40x3.25x12		40.00±1.00	3.25±0.25	12.00±0.50	35.00±0.70	0.55±0.20	9
12	FP 40x3.3x12		40.00±1.00	3.30±0.25	12.00±0.50	34.80±0.50	0.60±0.40	8
13	FP 42x4x22	MB	92.20±1.00	24.50±1.00	45.60±1.00	36.00±1.00	10.00±1.00	7
14	FP 42x4x22	MG	92.20±1.00	24.50±1.00	45.60±1.00	36.00±1.00	10.00±1.00	7
15	FP 45x6.35x10	M	45.00±1.00	6.35±0.25	10.00±0.40	34.40±0.70	0.80±0.20	1
16	FP 45x6.35x28.5	M	45.00±1.00	6.35±0.25	28.50±0.70	34.40±0.70	0.80±0.20	1
17	FP 49.6x3.25x5		49.60±1.00	3.25±0.25	5.00±0.30	44.00±0.80	0.55±0.20	6
18	FP 49.6x3.25x12		49.60±1.00	3.25±0.25	12.00±0.50	44.00±0.80	0.55±0.20	6
19	FP 55.1x6.35x10	M	55.10±1.20	6.35±0.25	10.00±0.40	43.70±1.00	0.80±0.20	1
20	FP 55.1x6.35x28.5	M	55.10±1.20	6.35±0.25	28.50±0.70	43.70±1.00	0.80±0.20	1
21	FPC 60x2.7x12		60.00±1.20	2.70±0.20	12.00±0.50	-	-	5
22	FP 63.5x6.35x13	M	63.50±1.20	6.35±0.25	13.00±0.40	52.00±1.00	1.10±0.30	1
23	FP 63.5x6.35x15	M	63.50±1.20	6.35±0.25	15.00±0.40	52.00±1.00	0.80±0.20	1
24	FP 63.5x6.35x28.5	M	63.50±1.20	6.35±0.25	28.50±0.70	52.00±1.00	0.80±0.20	1
25	FP 63.5x6.35x28.5	MP	63.50±1.20	12.70±0.50	28.50±0.70	52.00±1.00	1.60±0.40	4
26	FP 76.2x6.35x28.5	M	76.20±1.50	6.35±0.25	28.50±0.80	65.30±1.30	0.85±0.20	1



※Other sizes are available upon request.

※All the data listed in this catalogue are for reference only, King Core reserves the right to alter or revise the specifications without prior notification.

# SPECIFICATION OF FP SERIES



※Other sizes are available upon request.

※All the data listed in this catalogue are for reference only, King Core reserves the right to alter or revise the specifications without prior notification.