

SPECIFICATION OF RC SERIES

APPLICATIONS

Enclosures for channel-type EMI suppressor snaps.

- * Internal and external power cables
- * Internal cables between PC boards and data connectors



ORDERING CODE

K5B RC 16 x 13 x 8 - M
 (1) (2) (3) (4) (5) (6)

- (1) MATERIAL
- (2) PRODUCT CODE
- (3) CORE OD
- (4) CORE LENGTH
- (5) CORE ID
- (6) PLASTIC CLAMPS



SHAPE

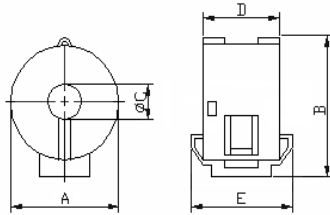


FIG 1

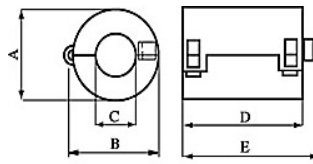


FIG 2

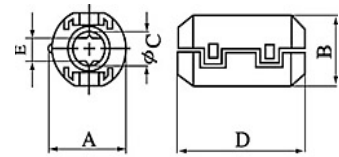


FIG 3

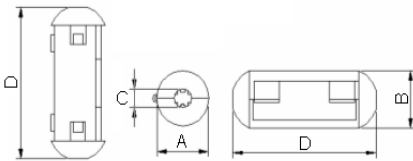


FIG 4

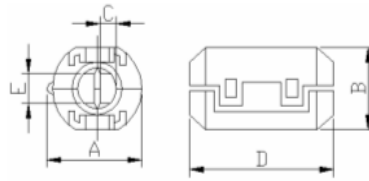


FIG 5

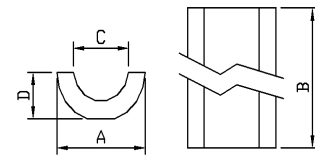


FIG 6

DIMENSIONS & CHARACTERISTICS

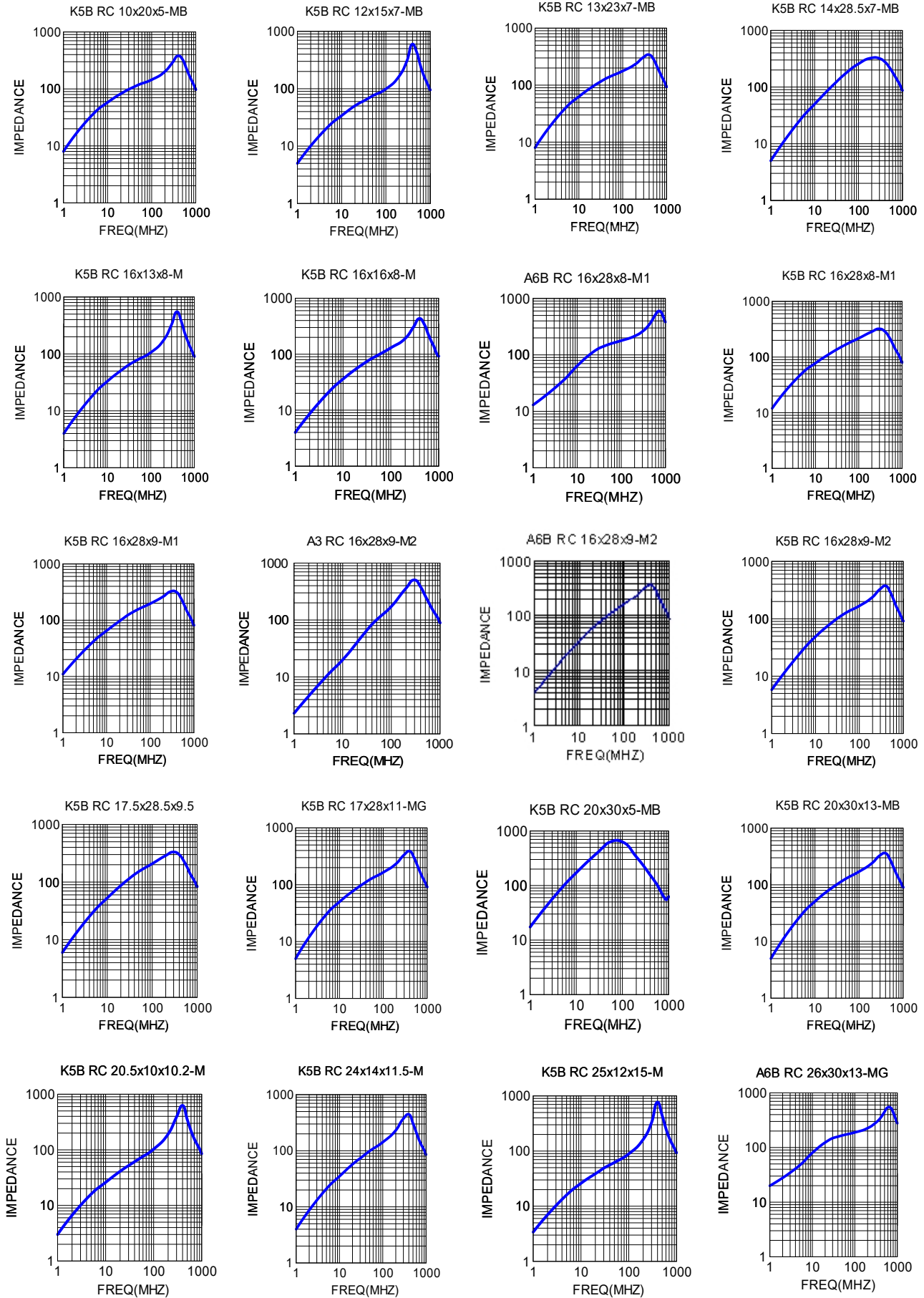
UNIT:mm

| NO. | ORDERING CODE | | A | B | C | D | E | Applicable cable(max) | Fig |
|-----|------------------|----|------------|------------|-------------|-------------------|------------|-----------------------|-----|
| 1 | RC 10x20x5 | M | 13.00±1.00 | 12.00±1.00 | 5.00±1.00 | 25.50±1.00 | 2.40±0.50 | 3.5 | 3 |
| 2 | RC 12x15x7 | M | 14.00±1.00 | 15.50±1.00 | 7.00±1.00 | 18.00±1.00 | 22.00±1.00 | 7 | 2 |
| 3 | RC 13x23x7 | M | 17.00±1.00 | 15.00±1.00 | 7.00±1.00 | 30.00±1.00 | 3.00±1.00 | 4 | 3 |
| 4 | RC 14x28.5x7 | M | 20.00±1.00 | 20.00±1.00 | 8.50±1.00 | 39.00±1.00 | - | 7 | 4 |
| 5 | RC 16x13x8 | M | 19.50±1.00 | 23.00±1.00 | 8.00±1.00 | 17.00±1.00 | 23.00±1.00 | 8 | 1 |
| 6 | RC 16x16x8 | M | 19.20±1.00 | 23.40±1.00 | 8.20±1.00 | 20.00±1.00 | 26.10±1.00 | 8 | 1 |
| 7 | RC 16x28x8 | M1 | 19.50±1.00 | 20.00±1.00 | 9.50±1.00 | 31.00±1.00 | 35.00±1.00 | 8 | 2 |
| 8 | RC 16x28x9 | M1 | 19.50±1.00 | 20.00±1.00 | 9.50±1.00 | 31.00±1.00 | 35.00±1.00 | 9 | 2 |
| 9 | RC 16x28x9 | M2 | 20.00±1.00 | 18.00±1.00 | 9.50±1.00 | 36.00±1.00 | 6.50±1.00 | 9 | 3 |
| 10 | RC 17.5x28.5x9.5 | | 17.50±0.30 | 28.50±0.60 | 9.50±0.25 | 8.75(+0.00/-0.60) | - | 9 | 6 |
| 11 | RC 17x28x11 | M | 20.50±1.00 | 20.50±1.00 | 11.00±1.00 | 31.50±1.00 | 36.00±1.00 | 11 | 2 |
| 12 | RC 20x30x5 | M | 23.00±1.00 | 22.00±1.00 | 5.00±1.00 | 36.00±1.00 | 10.00±1.00 | 4*1.5 | 5 |
| 13 | RC 20x30x13 | M | 23.00±1.00 | 22.00±1.00 | 13.50±1.00 | 36.00±1.00 | 10.00±1.00 | 12 | 3 |
| 14 | RC 20.5x10x10.2 | M | 24.50±1.00 | 28.50±1.00 | 10.20±1.00 | 13.50±1.00 | 20.00±1.00 | 10 | 1 |
| 15 | RC 24x14x11.5 | M | 28.00±1.00 | 31.50±1.00 | 11.50±1.00 | 18.00±1.00 | 24.00±1.00 | 11.5 | 1 |
| 16 | RC 25x12x15 | M | 29.00±1.00 | 33.00±1.00 | 15.00±1.00 | 15.50±1.00 | 21.50±1.00 | 15 | 1 |
| 17 | RC 26x30x13 | M | 30.75±1.00 | 31.00±1.00 | 13.00±1.00 | 34.00±1.00 | 39.00±1.00 | 13 | 2 |
| 18 | RC 35.5x15x23 | | 35.50±0.60 | 15.00±0.40 | 22.50-23.00 | 17.40±0.20 | - | 22 | 6 |

※Other sizes are available upon request.

※All the data listed in this catalogue are for reference only, King Core reserves the right to alter or revise the specifications without prior notification.

SPECIFICATION OF RC SERIES



※Other sizes are available upon request.

※All the data listed in this catalogue are for reference only, King Core reserves the right to alter or revise the specifications without prior notification.



KING CORE ELECTRONICS INC.

Tel:886-3-4698855

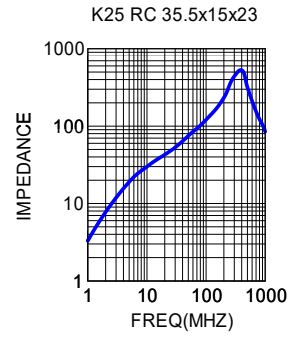
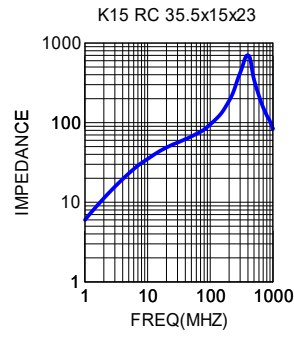
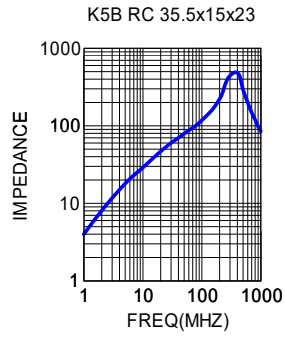
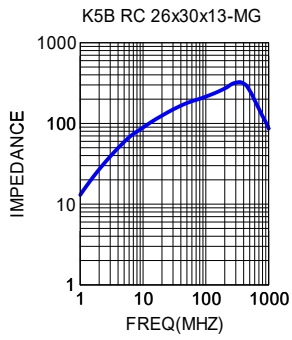
Fax:886-3-4691395

No.269,Nanfong Rd.,Pingjhen City,Taoyuan County, Taiwan

E-mail:kc@mail.kingcore.com.tw

Web Site:http://www.kingcore.com.tw

SPECIFICATION OF RC SERIES



※Other sizes are available upon request.

※All the data listed in this catalogue are for reference only, King Core reserves the right to alter or revise the specifications without prior notification.



KING CORE ELECTRONICS INC.
 Tel:886-3-4698855 Fax:886-3-4691395

No.269,Nanfong Rd.,Pingjhen City,Taoyuan County, Taiwan
 E-mail:kc@mail.kingcore.com.tw Web Site:http://www.kingcore.com.tw