

SPECIFICATION OF RID & RHH SERIES

APPLICATIONS

The RID balun cores are used for wideband transformers and balance to unbalance transformers. But today they can be found wide application not only in the input circuits to TV and FM tuners but also in CATV , MATV networks and installations.



ORDERING CODE

K5B RID 7.5 × 4 × 13 - 4.1 K5B RHH 6.5 × 6 × 1.3
 (1) (2) (3) (4) (5) (6) (1) (2) (3) (4) (5)

- (1) MATERIAL
- (2) PRODUCT CODE
- (3) A DIM.
- (4) B DIM.
- (5) D DIM.
- (6) C DIM.

- (1) MATERIAL
- (2) PRODUCT CODE
- (3) A DIM.
- (4) B DIM.
- (5) D DIM.



SHAPE

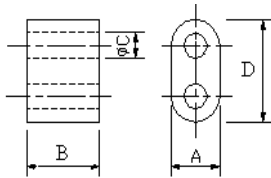


FIG 1

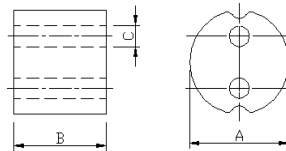


FIG 2

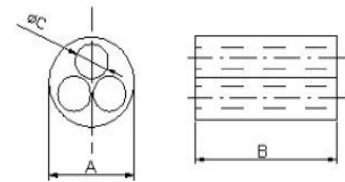


FIG 3

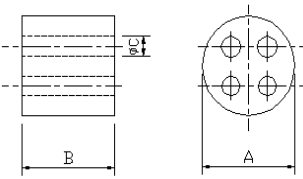


FIG 4

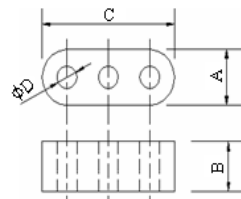


FIG 5

DIMENSIONS

UNIT:mm

| NO. | ORDERING CODE | A | B | C | D | Fig |
|-----|----------------------|------------|------------|------------|--------------------|-----|
| 1 | RID 2.2x5.5x7.5-0.85 | 2.20±0.20 | 5.50±0.30 | 0.85±0.25 | 7.50±0.30 | 1 |
| 2 | RID 2.5x6x5-1.2 | 2.50±0.20 | 6.00±0.30 | 1.20±0.15 | 5.00±0.20 | 1 |
| 3 | RID 3x2x5-1.25 | 3.00±0.20 | 2.00±0.20 | 1.25±0.15 | 5.00±0.30 | 1 |
| 4 | RID 3x3x5-1.25 | 3.00±0.20 | 3.00±0.20 | 1.25±0.15 | 5.00±0.30 | 1 |
| 5 | RID 3x3x5-1.4 | 3.00±0.20 | 3.00±0.20 | 1.40±0.15 | 5.00±0.30 | 1 |
| 6 | RID 3x5x5-1.5 | 3.00±0.20 | 5.00±0.30 | 1.50±0.15 | 5.00±0.30 | 1 |
| 7 | RID 3.5x7.4x8-1.8 | 3.50±0.20 | 7.40±0.30 | 1.80±0.15 | 8.00±0.30 | 1 |
| 8 | RID 4.1x3.2x7-1.8 | 4.10±0.20 | 3.20±0.20 | 1.80±0.15 | 7.00±0.30 | 1 |
| 9 | RID 4.1x4x7-1.8 | 4.10±0.20 | 4.00±0.20 | 1.80±0.15 | 7.00±0.30 | 1 |
| 10 | RID 4.1x6.3x7-1.8 | 4.10±0.30 | 6.30±0.30 | 1.80±0.15 | 7.00±0.30 | 1 |
| 11 | RID 6.5x4x12-3.8 | 6.50±0.40 | 4.00±0.20 | 3.80±0.20 | 12.00±0.30 | 1 |
| 12 | RID 7.5x4x13-4.1 | 7.50±0.30 | 4.00±0.30 | 4.10±0.20 | 13.00±0.40 | 1 |
| 13 | RID 7.5x7x13-4.1 | 7.50±0.40 | 7.00±0.30 | 4.10±0.20 | 13.00(+0.50/-0.30) | 1 |
| 14 | RID 7.5x10x13-4.1 | 7.50±0.30 | 10.00±0.30 | 4.10±0.25 | 13.00±0.50 | 1 |
| 15 | R3D 4.5x6.5x12.9-1.7 | 4.50±0.20 | 6.50±0.30 | 12.90±0.30 | 1.70±0.15 | 5 |
| 16 | RHH 6.5x6x1.3 | 6.50±0.30 | 6.00±0.30 | 1.30±0.15 | - | 6 |
| 17 | RHH 6.8x5.5x1.5-S | 6.80±0.30 | 5.50±0.30 | 1.50±0.15 | - | 2 |
| 18 | RHH 7x5.5x1.55 | 7.00±0.30 | 5.50±0.30 | 1.55±0.15 | - | 6 |
| 19 | R3H 16x28x5 | 16.00±0.40 | 28.00±0.60 | 5.00±0.25 | - | 3 |
| 20 | R4H 8x5x1.5 | 8.00±0.30 | 5.00±0.30 | 1.50±0.15 | - | 4 |

※Other sizes are available upon request.

※All the data listed in this catalogue are for reference only, King Core reserves the right to alter or revise the specifications without prior notification.